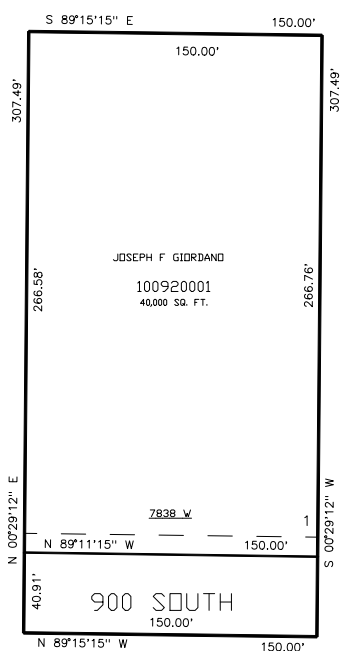


PART OF THE SE.1\4, OF SECTION 15, T.6N., R.3W., S.L.B. & M.
ONE FOR THE KID SUBDIVISION

IN WEBER COUNTY
SCALE 1" = 50'

TAXING UNIT: 303

SEE PAGE 37



SEE PAGE 37

SEE PAGE 37

SEE PAGE 43

10' UTILITY & DRAINAGE EASEMENTS EACH
SIDE OF PROPERTY LINES AS INDICATED
BY DASHED LINES EXCEPT AS OTHERWISE
SHOWN.

FOR COMPLETE ENG DATA SEE
ORIGINAL DEDICATION PLAT IN
BOOK 54, PAGE 28 OF RECORDS.